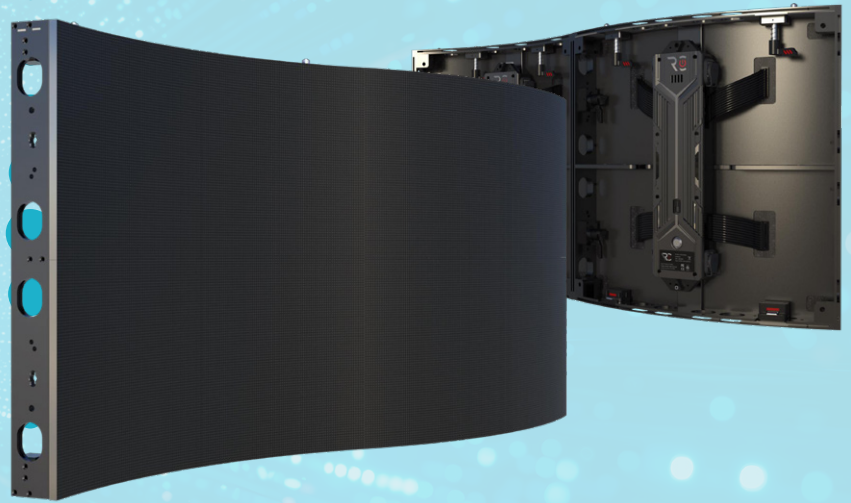


# LDC496XX-L Curved

## INDOOR P1.5, P1.9, P2.5



An innovative high performance curved LED solution for indoor public facing applications.



### TECHNOLOGY: MICOX MIP



High Contrast



Super Efficient



High Brightness

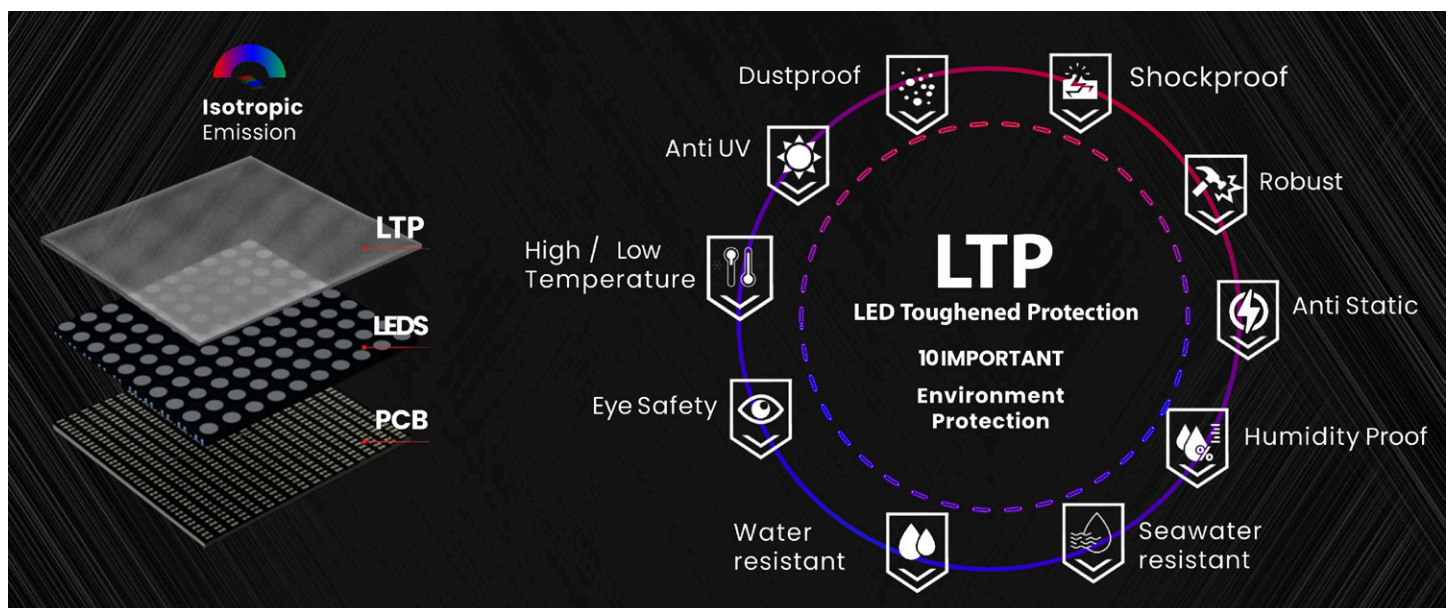


Long Lifetime



Exterior

### TECHNOLOGY: LTP (LED TOUGHENED PROTECTION)



## FEATURES



**Front maintenance:**  
Easy and fast for front maintenance



**Easily integrated:**  
compatible with alternate product housing and cabinets for innovative design.



**Creative shape**



**Concave and convex**



**Fine pitch flexible modules**



**Unique LTP coating:**  
Repairable LED Treated Protection



Maintenance tool

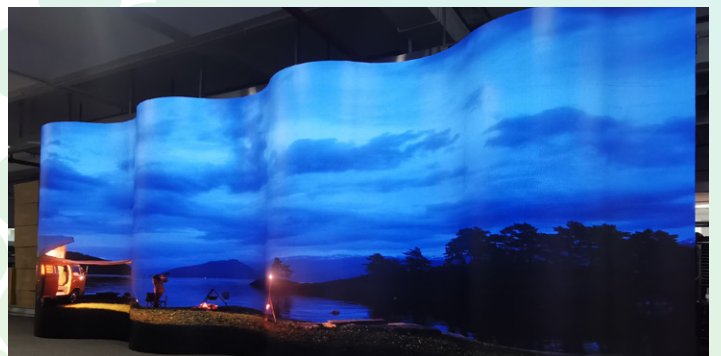
992mm



496mm

## LDC496 SERIES

- 0°-45° Concave & Convex
- Front maintenance
- LTP Coating for anti-collision



## SPECIFICATIONS

SERIES	LDC49615SFP-L	LDC49619SFP-L	LDC49626FP-L
Pitch	<b>1.55</b>	<b>1.93</b>	<b>P2.58</b>
MicroX mode (cd/m <sup>2</sup> )	>800	>800	>800
Distance	>1.55m	>1.93m	>2.58m
Protection	LTP (LED Toughened Protection)		
LED Kind	SMD1010	SMD1010	SMD1010/SMD1515
Pixel Density (dots/m <sup>2</sup> )	416,025	268,324	150,232
Technology	MicroX		
Refresh Rate	1920Hz-3840Hz		
Viewing Angle	160°(H) / 160°(V)		
Contrast	6000:1		
Module Size	248 x 248mm		
Cabinet Size	496 x 496 x 55mm / 62mm (19.5" x 19.5" x 2.2" / 2.4")		
Cabinet Res (px)	320 x 320	256 x 256	192 x 192
System	Stacking / Hanging / Stitching		
Drive Mode (Scan)	1/32	1/32	1/24
Environment	IP40 / IP20		
Max Power (w/m <sup>2</sup> )	(CCT) 600		
Voltage	AC 100-240V		
Weight	7.5kg/Panel		
Certification	CE, EMC, TUV-EMC, FCC, ETL, PSE, CCC, RoHS		

