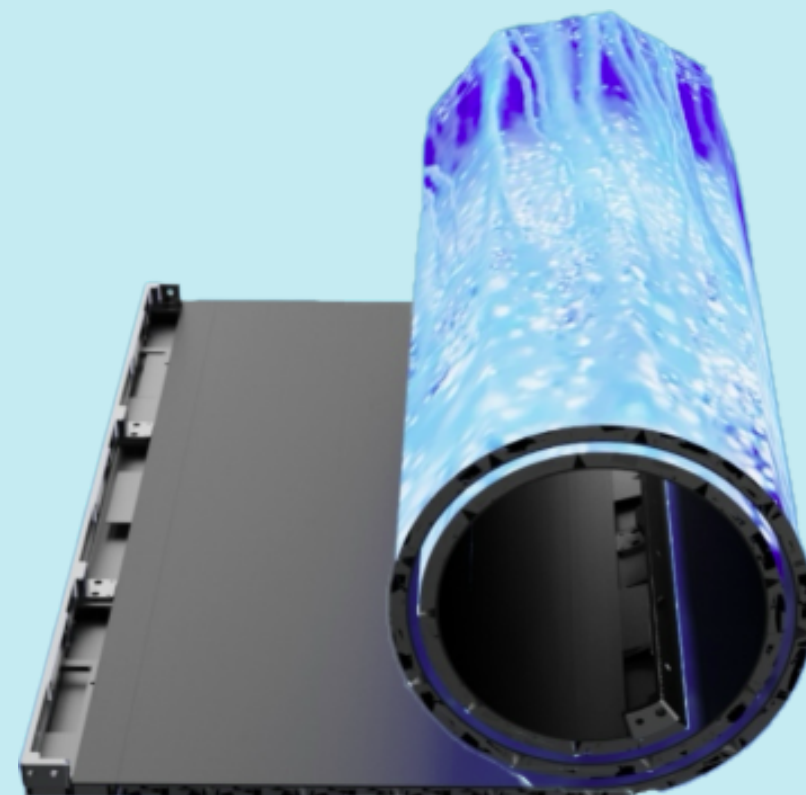


LDC500XXSFP-ROLL-V



Innovative flexible design
that rolls up like paper



GOB Technology

Features an IK10-rated, anti-collision surface and IP65 waterproofing. Includes a non-slip, anti-reflective coating and high-contrast LEDs for consistent, high-quality visuals. Built-in receiving card included.

Lightweight & Ultra-Thin

Weighing only 15kg/m² with a 10mm thickness, it's easy to install and transport - enabling creative, flexible designs with minimal structural support.

6063 Aluminum Module Case

Crafted using a precision stretching process for accurate dimensions and superior heat dissipation.

Tool-Free Installation & Maintenance

A simplified structure allows for quick setup and easy maintenance.



LDC500XXSFP-ROLL-V

SPECIFICATIONS

| Type | LDC50012SFP-ROLL-V | LDC50015SFP-ROLL-V | LDC50019SFP-ROLL-V | LDC50026FP-ROLL-V | LDC50039FP-ROLL-V |
|------------------------------------|------------------------|--------------------|--------------------|-------------------|-------------------|
| LED Type | SMD1010 | SMD1010 | SMD1010 | SMD1415 | SMD2020 |
| Pixel Pitch (mm) | 1.25 | 1.56 | 1.95 | 2.6 | 3.91 |
| Cabinet Size (W x H x D mm) | 500 x 62.5 x 12 | | | | |
| Cabinet Resolution (mm) | 400 x 50 | 320 x 40 | 256x 32 | 192 x 24 | 128 x 16 |
| Cabinet Weight (kg/m²) | 15 | | | | |
| Brightness (cd/m²) | 700 | | | 900 | |
| Refresh Rate (Hz) | 3840 | | | | |
| Scan rate | 1/50 | 1/40 | 1/32 | 1/24 | 1/16 |
| Gray Scale (bit) | 16 | | | | |
| Power Consumption Max / Ave (W/m²) | 512 / 165 | 512 / 135 | | | |
| Viewing Angle H / V (deg) | 140 / 140 | | | | |
| Cabinet Material | Aluminum | | | | |
| Maintenance | Front and Rear | | | | |
| AC Input Voltage (V) | 100-240 | | | | |
| Operating Temperature (°C) | -20 ~ 50 | | | | |
| Certificates | CE, ETI, FCC, EMC, PSE | | | | |

*All data provided are from factory lab and are subject to change without prior notice.

