

Weather Proof

5.9
mm



Super High Bright
Outdoor Signage



Super High Bright Outdoor Signage Solution

Model
LDC64059WPR-HB

No matter what time of the day your audience will be captivated by the leading edge picture quality and brightness levels.

Incorporate the latest innovations and features including onboard cloud based signage (Android Platform), Power metering dashboards and reporting on LUX range Simplified control via IPAD, Iphone or Web Browser and Customised Scoreboard Options that can be customised for each project application

Features

- 60 - 65mm Cabinet Depth
- 3 in 1 Type
- Up to 10000 NIT
- Power Metering Option
- IP65/68
- Automated Dimming and Brightness Sensing

Advantages

- Suitable with Aurora Mounting Solutions: Wall, Hanging, Custom.
- Full Front Service
- 3 in 1 Hub
- Optimal View Angles
- Android On Board

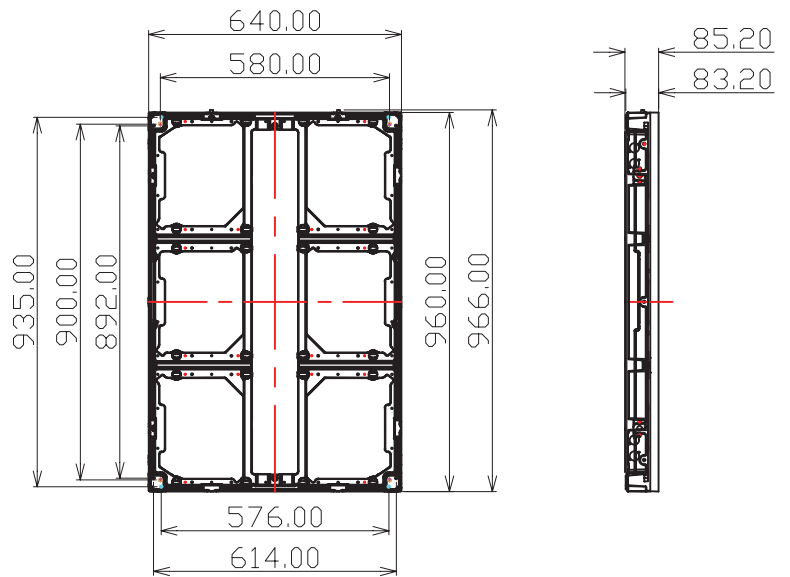
Super High Bright Outdoor Signage Solution



Panels & Cabinate



LDP2625 Processor



Dimensions Diagram

ITEM TYPE

LDC64059WPR-HB

Product Range



Dot Pitch	5.9mm
Pixel Configuration	1RGB
Pixel / SQM	28476
Brightness	10000
Module Resolution	54 pixels x 54 pixels
Scanning Method	1/7 Constant Current
Module Dimension	320(W) x 320(H)
Drive IC	ICN2049 or ICN2069
LED & Drive Composition	Light - Drive Combo
Refresh Rate	1920Hz/s-3840HZ
Maintenance Mode	Front / Rear Service
Dimension	960(W)x640(H)mm
Module QTY	16 pcs
Power Supply	Meanwell 60A
Viewing Angle	H: 140° V: 110°
Brightness	>10000cd / m ²
Best Viewing Distance	>6m
LED Life	100000 hrs
Power Consumption	Max 800 w/m ² , Average 260 w/m ² *
Input Voltage	220V±10% Or 110V±10%
Operating Environment	-20°C-55°C; Humidity: 10%-90%
Weather Protection	IP65
LED Screen Weight	18kg / m ²

*Related to brightness & display content